

CHESTNUT STREET

LINDEN STREET

WEST GRAND AVENUE

Sample Drawings -
Not For Distribution

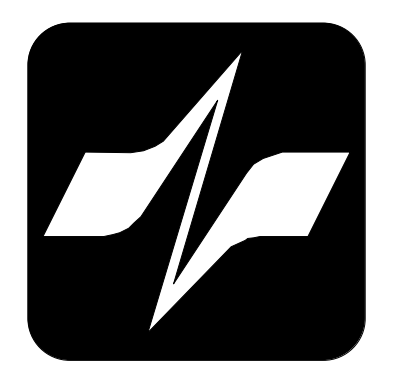
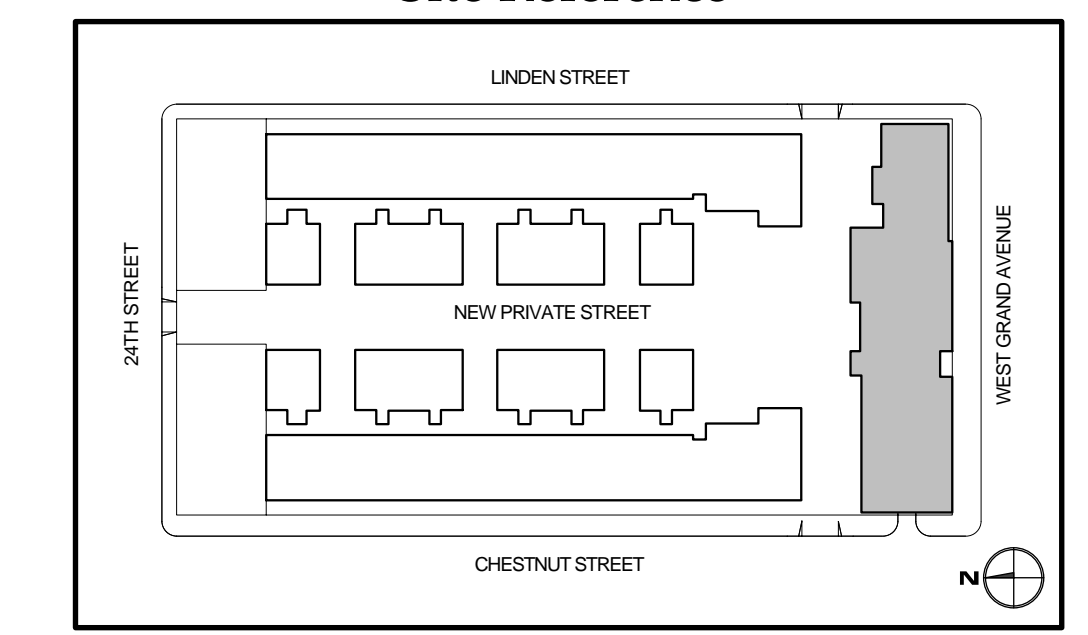
Wire Legend

A	(1) 16/2 TWISTED SHIELDED FPLP CABLE, SIGNALING LINE CIRCUIT
B	(1) 14/2 TWISTED SHIELDED FPLP CABLE, SIGNALING LINE CIRCUIT, UNDERGROUND
C	(1) 14/2 FPLP CABLE, STROBE/HORN STROBE/MINI HORN CIRCUIT
D	(2) #14 THHN CABLE, STROBE/HORN STROBE/MINI HORN CIRCUIT, UNDERGROUND
E	(1) 16/2 TWISTED SHIELDED FPLP CABLE, ANNUNCIATOR DATA CIRCUIT
F	(1) 14/2 FPLP CABLE, ANNUNCIATOR POWER
G	(2) #14 THHN CABLE, ANNUNCIATOR POWER, UNDERGROUND

Sheet Notes:

- HEAT DETECTOR TO BE LOCATED WITHIN 24" OF EACH SPRINKLER HEAD IN ELEVATOR MACHINE ROOM. FIELD VERIFY EXACT LOCATION AND QUANTITY.
- RELAYS FOR ELEVATOR RECALL AND POWER SHUNT DISCONNECT. FIELD VERIFY EXACT LOCATION.
- FIELD VERIFY SPRINKLER WATERFLOW, TAMPER AND PIV LOCATIONS.

Site Reference



AECO SYSTEMS
28302 Industrial Blvd - Suite A
Hayward, CA 94545
(510) 342-0008
FAX (510) 342-0013

Chestnut Court
24th Street & Chestnut St. Oakland, CA

REVISION	DESCRIPTION	DATE	Drawn By: A. EBY
-			Date: 8/19/02
			Scale: 1/8" = 1'-0"
			Job No: 80132

West Grand Avenue
First Floor
FIRE ALARM SYSTEM
Sheet Number
FA-2.01
Chestnut Court